
 Certificate ID: **64271**

 Received: **9/13/19**

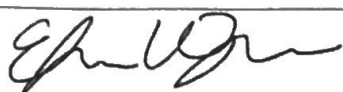
 Scan QR Code
for authenticity

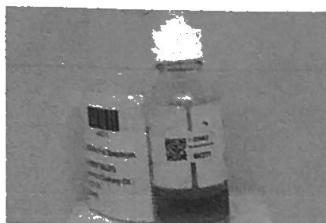
1Life Inc.
7222 Washington Ave S
Eden Prairie, MN 55344
Attn: Andrew Freeburg

 Client Sample ID: **1000mg Full Spectrum**

Lot Number:

 Matrix: **Tincture/Infused Oil - MCT Oil**

Authorization:	Signature:	Date:
Elizabeth R. Wagoner, Lab Director		10/15/2019



The data contained within this report was collected in accordance with the requirements of ISO/IEC17025:2017. I attest that the information contained within the report has been reviewed for accuracy and checked against the quality control requirements for each method. These results relate only to the test article listed in this report. Reports may not be reproduced except in their entirety.

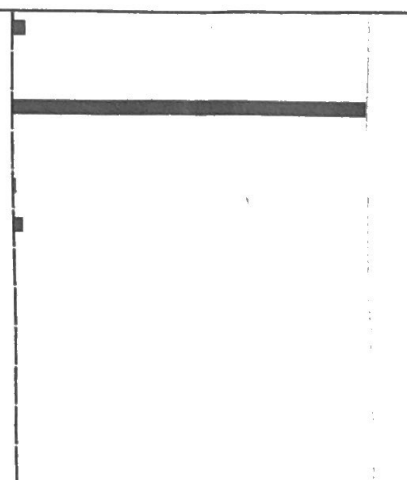
CN: Cannabinoid Profile & Potency [WI-10-17 & WI-10-17-01]

 Analyst: **JSG**

 Test Date: **10/10/2019**

The client sample was analyzed for plant-based cannabinoids by Liquid Chromatography (LC). The collected data was compared to data collected for certified reference standards at known concentrations.

64271-CN

ID	Weight %	Concentration (mg/mL)			
D9-THC	0.15	1.42			
THCV	ND	ND			
CBD	4.12	38.80			
CBDV	0.02	0.15			
CBG	0.04	0.34			
CBC	0.11	1.03			
CBN	<0.01	<LOQ			
THCA	ND	ND			
CBDA	ND	ND			
CBGA	ND	ND			
D8-THC	ND	ND			
exo-THC	ND	ND			
Total	4.44	41.79	0%	Cannabinoids (wt%)	4.1%
Max THC	0.15	1.42			
Max CBD	4.12	38.80			

 Ratio of Total CBD to THC **27.4:1**

Limit of Quantitation (LOQ) = 0.01 wt%

Max THC (and Max CBD) are calculated values for total cannabinoids after heating, assuming complete decarboxylation of the acid to the neutral form. It is calculated based on the weight loss of the acid group during decarboxylation: Max THC = (0.877 x THCA) + THC. This calculation does not include other cannabinoid isomers (eg. D8-THC and exo-THC). ND = None detected above the limits of detection (LOD), which is half of LOQ.

Full Spectrum - 1500 mg Tincture

Batch ID: A012319T3K

Test ID: 7023359.010

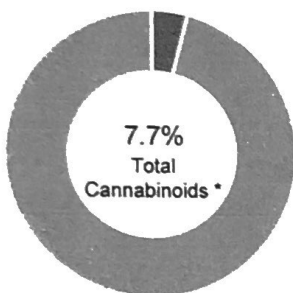
Reported: 6-Feb-2019

Method: TM01

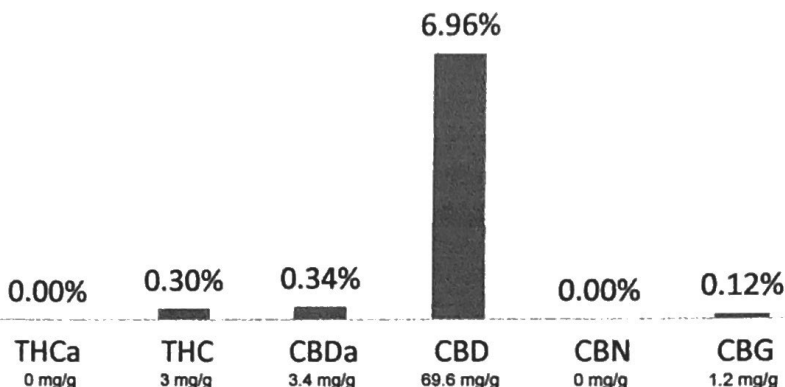
Type: Concentrate

Test: Potency

CANNABINOID PROFILE



* Total Potential THC 0.3% **
* Total Potential CBD 7.26% **



* Total Cannabinoids result reflects the absolute sum of all cannabinoids detected.

** Total Potential THC/CBD is calculated using the following formulas to take into account the loss of a carboxyl group during decarboxylation step.

Total THC = THC + (THCa * (0.877)) and Total CBD = CBD + (CBDa * (0.877))

% = % (w/w) = Percent (Weight of Analyte / Weight of Product)

NOTES

Free from visual mold, mildew, and foreign matter.

FINAL APPROVAL

Sam Smith

Sam Smith
6-Feb-2019
11:20 AM

David Green

David Green
6-Feb-2019
12:46 PM

PREPARED BY / DATE

APPROVED BY / DATE

Testing results are based solely upon the sample submitted to Botanacor Services, LLC, in the condition it was received. Botanacor Services, LLC warrants that all analytical work is conducted professionally in accordance with all applicable standard laboratory practices using validated methods. Data was generated using an unbroken chain of comparison to NIST traceable Reference Standards and Certified Reference Materials. This report may not be reproduced, except in full, without the written approval of Botanacor Services, LLC. ISO/IEC 17025:2005 Accredited A2LA Certificate Number 4329.02



Certificate #4329.02

prepared for: 1 LIFE INC
7220 Washington Ave S
Eden Prairie, MN 55433

Full Spectrum - 300 mg Tincture

Batch ID: A012319T5

Test ID: 7023359.007

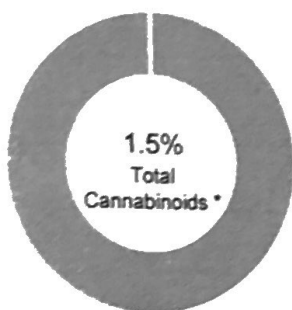
Reported: 6-Feb-2019

Method: TM01

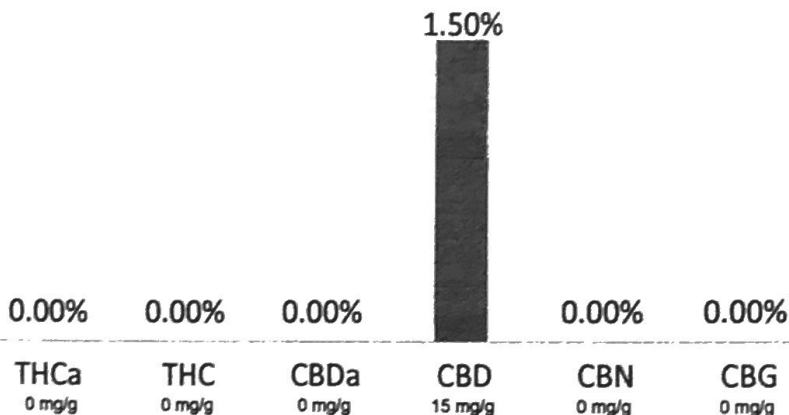
Type: Concentrate

Test: Potency

CANNABINOID PROFILE



- Total Potential THC 0% **
- Total Potential CBD 1.5% **



* Total Cannabinoids result reflects the absolute sum of all cannabinoids detected.

** Total Potential THC/CBD is calculated using the following formulas to take into account the loss of a carboxyl group during decarboxylation step.

Total THC = THC + (THCa * (0.877)) and Total CBD = CBD + (CBDa * (0.877))

% = % (w/w) = Percent (Weight of Analyte / Weight of Product)

NOTES

Free from visual mold, mildew, and foreign matter.

FINAL APPROVAL

Sam Smith

Sam Smith
6-Feb-2019
11:20 AM

David Green

David Green
6-Feb-2019
12:46 PM

PREPARED BY / DATE

APPROVED BY / DATE

Testing results are based solely upon the sample submitted to Botanacor Services, LLC, in the condition it was received. Botanacor Services, LLC warrants that all analytical work is conducted professionally in accordance with all applicable standard laboratory practices using validated methods. Data was generated using an unbroken chain of comparison to NIST traceable Reference Standards and Certified Reference Materials. This report may not be reproduced, except in full, without the written approval of Botanacor Services, LLC. ISO/IEC 17025:2005 Accredited A2LA Certificate Number 4329.02



Certificate #4329.02

prepared for: 1 LIFE INC
7220 Washington Ave S
Eden Prairie, MN 55433

Full Spectrum - 500 mg Tincture

Batch ID: A012319T1K

Test ID: 7023359.008

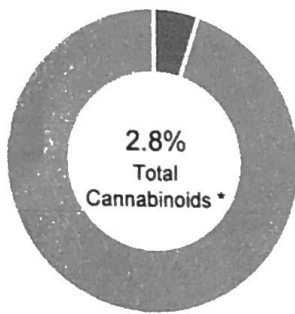
Reported: 6-Feb-2019

Method: TM01

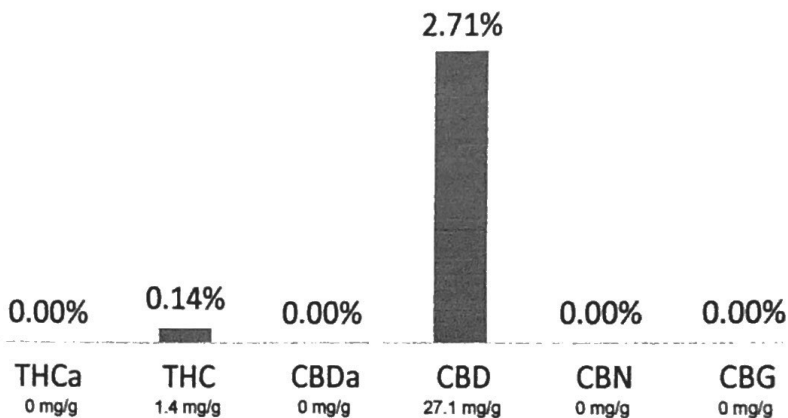
Type: Concentrate

Test: Potency

CANNABINOID PROFILE



- Total Potential THC 0.14% **
- Total Potential CBD 2.71% **



* Total Cannabinoids result reflects the absolute sum of all cannabinoids detected.

** Total Potential THC/CBD is calculated using the following formulas to take into account the loss of a carboxyl group during decarboxylation step.

Total THC = THC + (THCa * (0.877)) and Total CBD = CBD + (CBDa * (0.877))

% = % (w/w) = Percent (Weight of Analyte / Weight of Product)

NOTES:

Free from visual mold, mildew, and foreign matter.

FINAL APPROVAL

Sam Smith

Sam Smith
6-Feb-2019
11:20 AM

David Green

David Green
6-Feb-2019
12:46 PM

PREPARED BY / DATE

APPROVED BY / DATE

Testing results are based solely upon the sample submitted to Botanacor Services, LLC, in the condition it was received. Botanacor Services, LLC warrants that all analytical work is conducted professionally in accordance with all applicable standard laboratory practices using validated methods. Data was generated using an unbroken chain of comparison to NIST traceable Reference Standards and Certified Reference Materials. This report may not be reproduced, except in full, without the written approval of Botanacor Services, LLC. ISO/IEC 17025:2005 Accredited A2LA Certificate Number 4329.02



Certificate #4329.02

prepared for: 1 LIFE INC
7220 Washington Ave S
Eden Prairie, MN 55433

Pain Roller

Pain Relief - Full Spectrum Gel - 3oz

Batch ID: A012319PR3

Test ID: 7023359.012

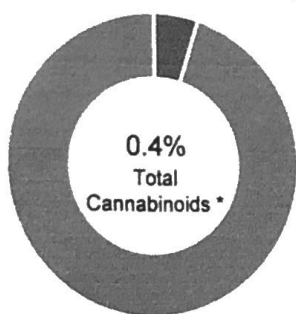
Reported: 6-Feb-2019

Method: TM01

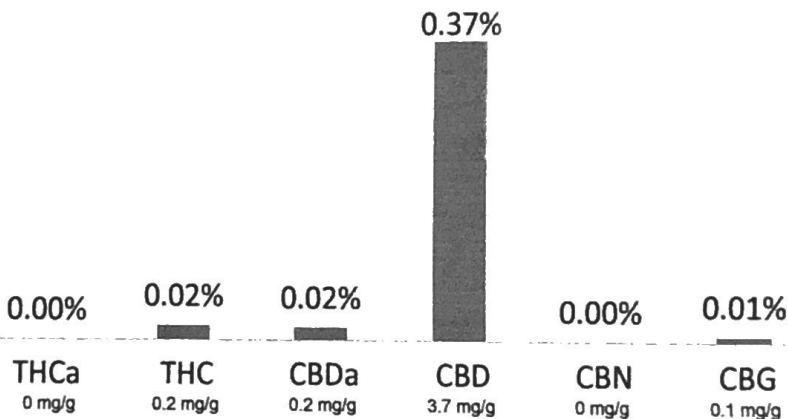
Type: Concentrate

Test: Potency

CANNABINOID PROFILE



- Total Potential THC 0.02% **
- Total Potential CBD 0.39% **



* Total Cannabinoids result reflects the absolute sum of all cannabinoids detected.

** Total Potential THC/CBD is calculated using the following formulas to take into account the loss of a carboxyl group during decarboxylation step.

Total THC = THC + (THCa * (0.877)) and Total CBD = CBD + (CBDa * (0.877))

% = % (w/w) = Percent (Weight of Analyte / Weight of Product)

NOTES:

Free from visual mold, mildew, and foreign matter.

FINAL APPROVAL

Samantha Smith

Sam Smith
6-Feb-2019
11:20 AM

David Green

David Green
6-Feb-2019
12:46 PM

PREPARED BY / DATE

APPROVED BY / DATE

Testing results are based solely upon the sample submitted to Botanacor Services, LLC, in the condition it was received. Botanacor Services, LLC warrants that all analytical work is conducted professionally in accordance with all applicable standard laboratory practices using validated methods. Data was generated using an unbroken chain of comparison to NIST traceable Reference Standards and Certified Reference Materials. This report may not be reproduced, except in full, without the written approval of Botanacor Services, LLC. ISO/IEC 17025:2005 Accredited A2LA Certificate Number 4329.02



Certificate #4329.02

34,31,23